

Sept. 21 - Oct. 20

dirty laundry

by **MATHILDE DRATWA**

directed by **REBECCA MARTÍNEZ**



By Special Arrangement with Spark Theatrical

WP THEATER



Lisa McNulty - Producing Artistic Director
Michael Sag - Managing Director



Laurie Bernhard - Founder

Present

dirty laundry

By Mathilde Dratwa

Directed by Rebecca Martínez

Featuring

Mary Bacon

Sasha Diamond

Amy Jo Jackson

Richard Masur

Lakisha May

Constance Shulman

Scenic Design
Raul Abrego

Costume Design
Lux Haac

Lighting Design
Cat Tate Starmer

Sound Design
Tosin Olufolabi

Hair Design
Brittany Hartman

Intimacy Director
Judi Lewis Ockler

Production Stage Manager
Fran Acuña-Almiron

Casting Director
Kelly Gillespie, CSA

Production Management
Gary Levinson

Press Representative
Vivacity Media Group
Whitney Holden Gore
Leslie Papa

Dirty Laundry was originally commissioned by Audible

Dirty Laundry is produced with the generous support of Jana Hesser and Tim Davidson

CAST
(in alphabetical order)

Blue.....**Mary Bacon**
Red.....**Sasha Diamond**
Green.....**Amy Jo Jackson**
Me.....**Lakisha May**
My Dad.....**Richard Masur**
Another Woman.....**Constance Shulman**

Dirty Laundry is performed without an intermission

WP Theater gratefully acknowledges the support of:



Booth Ferris Foundation



MACMILLAN
FAMILY FOUNDATION



Council on
the Arts

NYC Cultural
Affairs



THE SHUBERT
FOUNDATION INC.

WHO'S WHO

Mathilde Dratwa (*Playwright*) is a Belgian playwright and screenwriter based in Brooklyn. Her plays include *Dirty Laundry* (world premiere WP), which was commissioned and released as an audio play by Audible, and which received the Henley Rose Award; *Milk & Gall* (world premiere Theatre503, London, published by Nick Hern Books); *A Play about David Mamet Writing a Play about Harvey Weinstein*; and *Esther Perel Ruined My Life*. Her work has been presented by the Ground Floor at Berkeley Rep, the Ojai Playwrights Conference, Roundabout Theatre Company, Rattlestick, Berkshire Theatre Group, American Players Theater, LAByrinth Theater Company and in London at the Young Vic. Mathilde is an inaugural Powers Playwriting Fellow at the Old Globe, an Affiliated Writer at the Playwrights' Center, and was recently a member of the Orchard Project's Greenhouse, a Dramatist Guild Foundation Playwriting Fellow and a member of New York Foundation for the Arts' Immigrant Artist Program. She also writes for film and television; she has developed content for Netflix, FX, Chernin Entertainment, LuckyChap, Endeavor, Dirty Films, Red Wagon, Sony/TriStar and Wiip.

Rebecca Martínez (*Director*)(she/her) is a multidisciplinary director and the Cohort Collaborations Director for One Nation/One Project. Recent projects: *Bite Me* (WP Theater / Colt Coeur), *It Happened in Key West* (Fulton Theatre), *Sancocho* (WP Theater), *Living and Breathing* (Two River), *Los Complicados* (EST Marathon), *Randy's Dandy Coaster Castle* (Egg & Spoon Collective), *Songs About Trains* (Working Theater and Radical Evolution), *Somewhere Over the Border* (Syracuse Stage and Geva Theatre). Rebecca co-adapted and directed the 2023 & 2024 touring bilingual musical production of *The Comedy of Errors* (The Public Theater's Mobile Unit, Drama Desk Nomination, Outstanding Adaptation). She has developed new work with The Public Theater, Amas Musical Theater, the O'Neill, Latinx Playwrights Circle, the Sol Project, NAMT, INTAR, Working Theater, The Playwrights Realm, among others. Affiliations: Member of the Obie Award winning Sol Project Collective, Co-facilitator of the WP Directors Lab, 2021 TCG Rising Leaders of Color, Lincoln Center Theater Directors Lab, INTAR's Unit52, New Georges Affiliated Artist, Drama League Directing Fellow, member of SDC. Awards: Colorado Henry Award for Directing; four Portland, Oregon Drammy Awards; Lilla Jewel Award for Women Artists. Rebecca is originally from Colorado with ancestral roots in the Southwest and Bohemia. rebeccamartinez.org

Mary Bacon (*Blue*) Drama Desk Award for Patti in *Coal Country*, and Susan in *Nothing Gold Can Stay*, and her NYC theatre career. Broadway: *Rock N Roll*, *Arcadia*. Off-Broadway select credits: *DIG*, (Primary Stages), *Coal Country*, (Audible/The Public), *Giant*; (The Public), *Harrison, TX*, *Roads to Home*, *Little Women*, *Happy Now?* and Charles Busch's *The Tribute Artist*; (Primary Stages), *Days to Come*, *Women Without Men* (Drama Desk/Lortel nominations, The Mint), *Eccentricities of a Nightingale* (TACT). Recent regional: *THE SCARLET LETTER* (Two River), *SWEAT* (Guthrie). Film/TV and more at marybacon.net. Actors Center Member. For Andrew.

WHO'S WHO

Sasha Diamond (*Red*) (she/her) New York: *Regretfully, So the Birds Are* (Playwrights Horizons & WP Theatre), *Peerless* (Primary Stages), *Once Upon a (Korean) Time* (Ma-Yi), *Teenage Dick* (Ma-Yi & The Public), *Bobbie Clearly* (Roundabout), *Significant Other* (Broadway), *Kentucky* (Ensemble Studio Theatre), and others. Television credits include: *Mystic Christmas* (Hallmark), *The Equalizer* (CBS), *Bull* (CBS), *New Amsterdam* (NBC), *NCIS: New Orleans* (CBS), *Magnum: PI* (CBS), *Tommy* (CBS).

Amy Jo Jackson (*Green*) (they/she): WP Debut! NYC: Ensemble Studio Theater, Company XIV, Prospect, Red Bull, NY Shakespeare Exchange, Exit Pursued by a Bear. Fav Regional: *Singin' in the Rain* (Weston), *Fun Home* (SpeakEasy Stage), *Cabaret* (Flat Rock), *Little Mermaid* (Arkansas Rep), *Cymbeline* (Opera House Arts), Film/TV: *Dicks: The Musical* (A24), *High Maintenance*, and the singing voice of a crab in *Under the Boardwalk* (Paramount). They won a 2022 Bistro Award for their acclaimed Tennessee Williams solo show *The Brass Menagerie* (official selection of the 2022 Provincetown Tennessee Williams Festival and 2023 Tennessee Williams Festival St. Louis). Her play *You Know What They Say About Scorned Women* was a 2024 winner of the Red Bull Short New Play Festival. Their original musical *Hatchetation* (@hatchetationthemusical) was a 2021 selection at the O'Neill (NMTC) and the 2023 Kilroy's List/Web. She was a finalist for the 2022 Larson Grant and is the recipient of a 2023 EST/Sloan Commission. Their work as a nightlife artist has found them on just about every cabaret and comedy stage in NYC, with solo engagements at 54 Below, Joe's Pub, the Green Room 42 and the Duplex. This one's for Jeff and the fam.

Richard Masur (*My Dad*) Here is a sampling of his 52 year career: Broadway: *Prayer For The French Republic*, *Lucky Guy*, *Democracy*, and *The Changing Room*; Off-Broadway (partial): *Sarah, Sarah*, *The Ruby Sunrise*, *Fetch Clay*, *Make Man*, *Relevance*, *The Net Will Appear*. He has appeared in over 60 feature films, including *Who'll Stop the Rain*; *The Thing*; *Heartburn*; *Risky Business*; *Under Fire*; *My Girl*; *License to Drive*; *Another Year Together*; *Before, During and After*; and *Hudson*. TV series (partial) – *The Girls on the Bus*, *Kaleidoscope*, *Transparent*, *Younger*, *Girls*, *Bull*, *The Good Wife*, *The Good Fight*, *Orange Is the New Black*, *Red Oaks*, *MASH*, *One Day at a Time*. Over 40 TV movies including - *Fallen Angel*, *Adam*, *The Burning Bed* (Emmy Nomination), *It*, *And The Band Played On*, and *61**. He was most recently seen on the HBO Max series *The Girls On The Bus*. Former National President, VP and Board Member of Screen Actors Guild & National Board Member of SAG-AFTRA. For a full list of his credits go to [imdb.com](https://www.imdb.com).

Lakisha May (*Me*) (she/her) Broadway: *Jaja's African Hair Braiding*, *Skeleton Crew* (Manhattan Theatre Club); Off-Broadway: *Everybody*, *In The Blood* (Signature Theatre Company), *Sojourners* (NYTW, Playwright's Realm), *The Miser* (Moliere in the Park); Regional Theater: La Jolla Playhouse, American Conservatory Theater, Alliance Theater, Arden Theatre, Marin Theater Company, and others.

WHO'S WHO

Film & TV: *Historias del Canal, City on a Hill, Boardwalk Empire, Law & Order: SVU, Forever, Blue Bloods* and others. Education: MFA, The American Conservatory Theater. BA, Spelman College. Lakisha creates her own work and has produced projects with Nikyatu Jusu, Rashad Frett, Saheem Ali, Monkeypaw Productions, and others. kishamay.com @kisha_may

Constance Shulman (*Another Woman*): Recent: Summerworks/Winterworks at Clubbed Thumb (*Find Me Here/Chairs*), *The Best We Could*, Manhattan Theater Club, *Shhhh*, Atlantic Theater Company, *The Rose Tattoo*, Roundabout, Broadway, *Bobbie Clearly*, Roundabout Underground (Drama Desk Nomination). TV: *The Curse, SHO; Orange Is The New Black* (three time SAG award for Best Ensemble in a comedy series), *DOUG*, animated series Nickelodeon/Disney. Film: From *Fried Green Tomatoes* to *Strawberry Mansion*.

Raul Abrego (*Set Designer*) is a set designer for Opera, Theater and Television. His work has been seen at The Juilliard Opera Center, The Manhattan School of Music, The Spoleto Opera Festival in Italy, Rattlestick, Cherry Lane Theater and INTAR. Noted Recent projects: *Adamandi* for Princeton University, book and lyrics by Mel Hornyak and Elliot Valentine Lee Directed by Georgina Escobar, *Ain't Misbehavin'* for Barrington Stage and Geva Theater Center, directed by Jeffrey Page. *The Brobot Johnson Experience* by Darian Dauchan at The Bushwick Starr, *Sancocho* by Christin Eve Cato Directed by Rebecca Martínez for WP Theater, *Living and Breathing* by Mando Alvarado Directed by Rebecca Martínez for Two River Theater, *How to Melt Ice* by Amalia Oliva Rojas for Boundless Theater Company and *New Perspectives* directed by Elena Araoz. Assistant Art Director credits for Television include: *The Marvelous Mrs. Maisel* Season 3 & 4, *Ghost (Power Book 2)* and *John Wick*, Art Director for *Falling Water* (pilot), *The Outcasts* (film) and Production Designer for 2009 film *Cruzando*.

Lux Haac (*Costume Designer*) Broadway: *The Thanksgiving Play*. Off-Broadway/New York: *Manhatta, Mobile Unit: The Comedy of Errors* (The Public Theater); *Between Two Knees, Number Our Days: A Photographic Oratorio* (PAC NYC); *On That Day in Amsterdam* (Primary Stages/59E59); *53% Of* (Second Stage Uptown); *Songs About Trains* (Radical Evolution/Working Theater/New Ohio Theatre); *Giizhibaa Giizhig | Revolving Sky* (Incoming! Under the Radar/The Public Theater); *Eureka Day* (Colt Coeur/Walkerspace); *Ajijaak on Turtle Island* (IBEX Puppetry/New Victory Theater); *R + J* (Hypokrit NYC/Access Theater); *Figaro!* (90210) (The Duke on 42nd Street). Regional: For the People (Guthrie Theater); *The Wizard of Oz* (Geva Theatre); *Between Two Knees* (OSF, Yale Rep, McCarter Theatre Center, Seattle Rep); *Espejos: Clean* (Hartford Stage, Syracuse Stage); *LEAR* (Cal Shakes); *Kim's Convenience* (Westport Country Playhouse, TheatreSquared); *Yoga Play, Ragtime* (PlayMakers Repertory Company); *Miss Bennet: Christmas at Pemberley* (Arizona Theatre Company);

WHO'S WHO

Kamloopa (WAM Theatre); *I and You, Annapurna* (Syracuse Stage); *Hear Me Say My Name* (Discovery Theater/NMAI); *Native Gardens* (Syracuse Stage, Geva Theatre, Portland Center Stage). Upcoming: *Dial M For Murder* (Syracuse Stage). luxhaac.com @luxhaac

Cat Tate Starmer (*Lighting Designer*) Off Broadway: *Georgia Mertching is Dead, White People* (Ensemble Studio Theatre); *Hold These Truths, MacBeth, Richard III* (Epic Theatre Ensemble); *American Journalero* (Working Theatre); Recent Regional designs include the world premier of *Thornton Wilder's The Emporium, Servant of Two Masters, A Christmas Carol, 1984* (LDI Design Achievement Award)(Alley Theatre); *Once* (Kansas City Rep); *A Thousand Maids, Living and Breathing* (Two River Theatre); *Hurricane Diane, They Promised Her the Moon* (Old Globe); *Steel Magnolias, Frankenstein* (LIT Design Award) (Guthrie Theatre); *Hold These Truths* (Theatreworks: Silicon Valley, Guthrie Theatre, ACT Seattle, Playmakers Rep, The Cultch, Vancouver); *Buzz* (Alabama Shakespeare Theatre); *The Great Immensity* (The Civilians); *Wickets* (HERE); *Seven* (World Premiere at 92nd St. Y); *The People Next Door* (Yale Rep). Cat has been a guest lecturer and designer at Yale, Juilliard, Barnard, Princeton, Brown, and Bard College. Cat designed the architectural lighting for Plaza 33, a pedestrian plaza near Penn Station in NYC and received two Lumen awards and a SOURCE Award for her work with Focus Lighting. She has been an adjunct professor at Fordham University and is currently a lecturer at Rutgers University Mason Gross School of the Arts. MFA: Yale School of Drama.

Tosin Olufolabi (*Sound Designer*) (she/her) is a sound designer, deviser, facilitator, and performer trained at the University of Richmond. After graduating, she continued training as the 2016 - 2017 sound apprentice at Olney Theatre Center and later joined dog & pony dc and Woolly Mammoth as a company member. NYC: *Stargazers* (Page 73); *Bite Me* (WP Theater). DC/MD/VA: *Gloria* (2018 Helen Hayes Nomination for Outstanding Sound Design for a Hayes Production); *There's Always the Hudson* and *Hi, Are You Single?*; *Incendiary*; *The Sensational Sea Mink-ettes* (Woolly Mammoth); *Ain't No Mo* (Woolly Mammoth/Baltimore Center Stage); *Life is a Dream* (Baltimore Center Stage); *Crying on Television*, Ken Ludwig's *Baskerville: A Sherlock Holmes Mystery*, *The Sound Inside*, *The Chinese Lady*, *Crumbs from the Table of Joy* (Everyman Theater); *School Girls; Or, The African Mean Girls Play*; *it's not a trip it's a journey* (Round House Theatre); *Sense & Sensibility* (The Village); *Moses, Fires in the Mirror* (Theater J); *The Thanksgiving Play* (Olney Theatre Center); *A Wind in the Door* (Kennedy Center Theater for Young Audiences).

Brittany Hartman (*Hair Design*) (she/her/hers) is currently the wig shop manager for *Saturday Night Live* and NBC studios. Film: *Fire Island* (Key Hairstylist, Hulu). Broadway: *The Thanksgiving Play*. Regional: *DiscoShow* (Speigelworld, Vegas), *Rent* (Papermill), *Camp Siegfried* (Second Stage), *Wizard of Oz* (GeVa), *Snow in Midsummer* (Classic Stage Company), *Ragtime*, *Secret Garden*, *The Wiz*, *Singin' in the Rain* (Broadway Music Circus), *Gypsy* (Theatre Aspen), *A Christmas Carol*, *La Dispute*, *Macbeth* (Hartford Stage).

WHO'S WHO

Broadway (selected associate design credits): *Jagged Little Pill*, *Frankie and Johnny...* (2019 revival), *Bandstand*, *Sunset Boulevard* (2017 revival), *A Gentleman's Guide to Love & Murder*, *Of Mice and Men* (2014 revival), *Violet*.

Samantha Tutasi (*Properties Supervisor*) Ecuadorian-American theater artist, most recent collaborations include: Properties Design - *Munich Medea: Happy Family* (WP Theater), *Coping Mechanism* (Wild Project); Scenic Design - *La Musica Deuxième* (A/Park Productions). *Authorial Intent*; *Exit, Pursued By A Bear*; *The Laramie Project* (ASDS Rep Theater). *Captain Courageous*; *The Secret Garden* (Powerhouse Theater Collaborative). *Virgin, Mother, Whore* (Boundless Theater Co.). Film - *Egg Timer* (dir. Annie Tippe). She frequently works with the American Theater Wing on their educational program, Springboard To Design. BFA: State University of New York at Purchase, 2022. samanthatutasidesign.myportfolio.com

Judi Lewis Ockler (*Intimacy Director*) has had the privilege of collaboration with Classic Stage Company (*Snow in Midsummer*, *A Midsummer Night's Dream*, *A Man of No Importance*), Signature Theater (*Hot Wing King*, *One in Two, Jasper*), WP Theater/Second Stage/Colt Coeur (*Hatef**k*, *Our Dear Dead Drug Lord*, *Bite Me*), Cherry Lane Theater (*This Beautiful Future*), New World Stages (*Dracula*, *A Comedy of Terrors!*, *MsTrial*), Theater Row (*Inheritance of a Long Term Fault*, w/Clutch Productions), The Mint Theater (*The Rat Trap*, US premiere) The Connelly Theater (*Persuasion*, w/Bedlam; *Stargazers*, w/Page 73), The Flea Theater, w/TOSOS (*Bar Dykes*, *Rock the Line*) and Williamstown Theater Festival (*A Raisin in the Sun*, *A Human Being, of a Sort*, directed by Robert O'Hara; Whitney White). Intimacy Coordinator tv/film credits include *Out of the Blue*, directed by Neil La Bute; *Plan B*, with Jamie Lee and John Heder, *Up Here* (Hulu). She teaches and directs intimacy and violence in performance at NYU Tisch, National Theater Institute, Atlantic Theater School, AMDA, The New School, and Sarah Lawrence College. judilewisockler.com

Fran Acuña-Almiron (*Production Stage Manager*) New York based Stage Manager who has worked with various companies around the city and has worked internationally as a Company Manager for One Year Lease Theater's Summer Program. She is thrilled to be working with WP Theater for the first time on this amazing production! Endless thanks to Christian who makes it possible for her to continue doing what she loves.

Celina Revollar (*Assistant Stage Manager*) is a proud Dominican and Peruvian stage manager from New Jersey. She is a graduate from Montclair State University with BFA in Theatrical Production focused in Stage Management. Recent credits include Andrew Lloyd Webber's *Bad Cinderella* (Broadway), *Death Becomes Her* (Broadway In Chicago), *Buena Vista Social Club* (Off Broadway), *Vámonos* (Off Broadway), *The Hours Are Feminine* (Off-Broadway), *In Corpo* (Off Broadway) and developmental projects for 321 Theatrical and RCI Theatricals.

WHO'S WHO

Kelly Gillespie, CSA (Casting Director) WP credits include: *Sancocho, sandblasted, Our Dear Dead Drug Lord, Natural Shocks, Hatefuck, What We're Up Against, Sundown Yellow Moon, Stuffed, Ironbound, Dear Elizabeth* and *Bright Half Life*. She is a Casting Director at Manhattan Theatre Club, where she has been on staff for the past fifteen years. Favorite MTC projects include *Prayer for the French Republic, The Best We Could, Skeleton Crew, Ink, Choir Boy* and *The Explorers Club*. She had the pleasure of casting four of 13P's shows: *Melancholy Play, A Map of Virtue, The Zero Hour* and *Monstrosity*. She has also cast productions for Arena Stage, Berkshire Theatre Festival, The Old Globe, Actors Theatre of Louisville, Marin Theater Company, City Theatre, Merrimack Rep, The Foundry Theater and EST, as well as twelve productions for off-Broadway's T.A.C.T. and six seasons for Keen Company.

Vivacity Media Group (*Press Representative*) has led the PR campaigns for over fifty theater productions. Select Broadway credits include: *The Great Gatsby, Once Upon a Mattress, How to Dance in Ohio, Once Upon A One More Time, Mike Birbiglia's The Old Man & The Pool, Alex Edelman's Just For Us, POTUS, Jagged Little Pill, On Your Feet!, Rock of Ages, Slava's SnowShow, Chicken & Biscuits*. Off-Broadway highlights: *Titanique; Little Shop of Horrors; Liz Kingsman's One Woman Show; Derek DelGaudio's In & Of Itself; Heathers: The Musical; Cruel Intentions; Accidentally Brave; A Clockwork Orange; The Other Josh Cohen*; and nine seasons for the Obie, Lortel & Drama Desk Award-winning WP Theater. Theatrical Institutions: American Theatre Wing, The Drama League, and Outer Critics Circle.

Laurie Bernhard/Spark Theatrical Laurie is an independent theatrical creative producer concentrating on daring new plays that provide a lens into the condition of being human. Laurie collaborates with playwrights, directors, dramaturgs, actors and designers exploring new work, experimenting and pushing boundaries. SPARK connects plays with non-profits that share a common mission, providing audiences with the opportunity for education and action beyond the play. SPARK Theatrical has multiple projects in development in Los Angeles and New York. Laurie is on the Boards of Ojai Playwrights Conference and Thunder River Theatre Company.

WP Theater, now in its 47th Season, is the nation's oldest and largest theater company dedicated to developing, producing and promoting the work of Women+ at every stage in their careers. For almost five decades we have served as leaders at the forefront of a global movement towards gender parity, and the example we set and the artists we have fostered have grown into a robust and thriving community of artists in theater and beyond. WP Theater received a 2018 Lucille Lortel Award, a 2019 Obie Award, and a 2020 Drama Desk Award, all for Outstanding Body of Work, recognizing WP's unique place and vital work in the theatrical landscape.

WHO'S WHO

WP empowers Women+ of all kinds to reach their full potential and, in doing so, challenges preconceptions about the kinds of plays Women+ write and the stories they tell. As the premiere launching pad for some of the most influential Women+ theater artists today, our work has had a significant impact on the field at large. Nearly every prolific female theater artist has been through our doors, including 2024 Tony Winner for Best Direction of a Musical, Danya Taymor, 2019 Tony Winner for Best Direction of a Musical, Rachel Chavkin, 2018 Tony Winner for Best Direction of a Play, Rebecca Taichman, 2013 Tony Winner for Best Direction of a Play, Pam MacKinnon, 2013 Tony Winner for Best Direction of a Musical, Diane Paulus, 2023 Pulitzer Prize Winner Eboni Booth, 2018 Pulitzer Prize Winner Martyna Majok, and two-time Pulitzer Prize Winner Lynn Nottage. These powerful women found an artistic home at WP and are a testament to our role as a driving cultural force.

WP was founded in 1978 by visionary producer, Julia Miles, to address the significant under-representation of women in theater. Today, WP accomplishes its mission through several fundamental programs, including: the WP Lab, a celebrated two-year mentorship and new play development program for Women+ playwrights, directors, and producers; the Domestic Partner residency program; the Developmental series of workshops and readings; the Commissioning series, and the Mainstage series, which features a full season of Off-Broadway productions written and directed by extraordinary theater artists. Current artists under commission are: Donnetta Lavinia Grays, Emily Kaczmarek, MJ Kaufman, Sylvia Khoury, Zizi Majid, Rehana Mirza, Zoe Sarnak, Rachel Wax, and Leah Nanako Winkler.

When we say Women+ we mean: cis women, trans, non-binary, or gender-nonconforming people and all gender identities which have been systematically oppressed throughout history in the theater and beyond.

CREATIVE TEAM

Author

Director

Scenic Design

Costume Design

Lighting Design

Sound Design

Hair Design

Intimacy Director

Casting Director

Mathilde Dratwa

Rebecca Martínez

Raul Abrego

Lux Haac

Cat Tate Starmer

Tosin Olufolabi

Brittany Hartman

Judi Lewis Ockler

Kelly Gillespie, C.S.A

STAFF FOR *DIRTY LAUNDRY*

Production Stage Manager	Fran Acuña-Almiron
Assistant Stage Manager	Celina Revollar
Production Manager	Gary Levinson
Technical Supervisor	Joel Howell & Brie Furches-Howell
Properties Supervisor	Samantha Tutas
Associate Production Manager	Hannah Sgambellone
Assistant Director	Sofia Ubilla
Assistant Costume Designer	Karen Boyer
Assistant Lighting Designer	Maz Sailer
Assistant Sound Designer	Nathan Rubio
Production Assistant	Rebecca Conaway
House Manager	Michael Valladares
Front of House Staff	Thomas Atseff, Khadija Bangoura, Petricia Hall, Nathan Malin, Safwa Ozair, Blessing Ogunsola, Kristan Seemel, Aubreyne Brizette Tolentino
Production Photography	Maria Baranova-Suzuki
Production Videography	Theo Cote
Production Electrician	Em Stripling
Production Audio	Harper Williams
Wardrobe Supervisor	Paul Orama
Light/Sound Board Operator	Riley Cavanaugh
Lightboard Programmer	Haley Burdette
Lighting	Hayden Productions Services
Audio	5Ohm Productions
Scenery	Howell Forge

SPECIAL THANKS

Arts Ignite, Ballantine Books, The Dinner Party, The Grand Bazaar, Goddard Riverside Community Center. And Special Thanks to Hal Brooks and Cape Cod Theater Project, Jeremy Cohen and Ojai Playwrights Conference.

WP THEATER STAFF

Producing Artistic Director

Lisa McNulty

Managing Director

Michael Sag

Daryl Roth Creative Spirit Resident

Rachel Wax

Julia Miles Playwright in Residence

Rehana Lew Mirza

Mellon Playwright in Residence

Cori Thomas

Tow Playwright in Residence

Francisca Da Silveira

Production Manager

Gary Levinson

Development Manager

Ria-Mae Binaoro

Marketing Director

Alisha Espinosa

Audience and Community

Engagement Manager

Julianna Azevedo Mitchell

Associate Production Manager

Hannah Sgambellone

Business and Company Manager

Michael Valladares

BOLD New Play Development

Consultant

Kristin Leahey

Directors Lab Leader

Katherine Wilkinson

Producers Lab Leaders

Lisa McNulty, Ayana Parker

Morrison

Playwriting Lab Leaders

Kristin Leahey, Francisca Da
Silveira

Commissioned Writers

Donnetta Lavinia Grays

Emily Kaczmarek

MJ Kaufman

Sylvia Khoury

Zizi Majid

Zoe Sarnak

Leah Nanako Winkler

Development Services

Advance NYC

Youree Jong Choi

Emily Cribbins

Emily Fleisher

Marketing Services

Tom O'Connor Consulting Group

Legal Counsel

S. Jean Ward, Esq., Aaron H.

Pierce, Esq.

Financial Management Services

Patricia Taylor

WP THEATER STAFF

**Financial Planning Consultant
Banking and Investments**

Payroll Services

Auditors

Insurance

Press Representative

Ari Teplitz
JP Morgan Chase
UBS (Jin Hu)
Paychex, Inc.
Lutz and Carr LLP
Gallagher, CS Plus
Vivacity Media Group
Leslie Papa
Whitney Holden Gore
Caitlin Brightman
Gerilyn Shur
Danaley Silan
Elizabeth Erb
FARSIGHT Agency:
Farah Bala
Ted Stephens III,
Numad Group
Syzygy 3, Inc.
Mariana Szoke
Martin Pavlicek

EDIA Leadership Consultant

Graphic Design

IT Consultant

Custodial Services

WP BOARD OF DIRECTORS

Lisa Timmel, *Chairperson*
Serra E. Eken, *Vice Chair*
Michelle S. Riley, *Secretary*
David W. Singleton, *Treasurer*

Sandy Ashendorf
Cody Cowan
Brandilyn Dumas, Esq.
Donnetta Lavinia Grays

Jessica R. Jenen
Casey Kemper
Samantha Sullivan Kindler
Joseph P. Petito, Esq.

Rachel Sussman
Tamilla Woodard
Lisa McNulty
Michael Sag

Julia Miles, Founder & Artistic Director Emerita



The Actors and Stage Managers employed in this production are members of ACTORS' EQUITY ASSOCIATION the union of professional actors and stage managers in the United States



UNITED SCENIC ARTISTS

UNITED SCENIC ARTISTS, Local USA 829, is a labor union and professional association of Designers, Artists and Craftspeople



The Director and Choreographer are Members of the STAGE DIRECTORS AND CHOREOGRAPHERS SOCIETY, a national theatrical labor union.

The Director and Choreographer are members of the STAGE DIRECTORS AND CHOREOGRAPHERS SOCIETY, a national theatrical labor union

WP Theater Gratefully Thanks Our Supporters

GLASS CEILING SMASHER

(Contributions of \$25,000 and above)

Cornelia T. Bailey Foundation	Julia Miles Family
Laurie Bernhard	National Endowment for the Arts
Booth Ferris Foundation	NYC Department of Cultural Affairs
The Howard Gilman Foundation	New York State Council on the Arts (NYSCA)
Helen Gurley Brown Foundation	Segal Family Foundation
Laurents Hatcher Foundation, Inc.	The Shubert Foundation, Inc.
Jana Hesser & Tim Davidson	Harold and Mimi Steinberg Charitable Trust
John & Robyn Horn Foundation	Tiger Baron Foundation
The MacMillan Family Foundation	The Tow Foundation
The Andrew W. Mellon Foundation	

REVOLUTIONARY

(Contributions of \$10,000 and above)

Anonymous	Michelle S. Riley & Susi Kandel
The MCJ Amelior Foundation	Mickey Rolfe
Disney Theatrical Group	Elaine & David Singleton
Annette Galassi & Joseph P. Petito, Esq.	Thomas Schumacher
The Horace W. Goldsmith Foundation	Sharon Sullivan & Jeffrey Kindler
The John Gore Organization	Lisa Timmel & David Markus
Anne & Geoff Quart	Wendy Vanden Heuvel

FRONT RUNNER

(Contributions of \$5,000 and above)

Sandy & Ron Ashendorf	Kristen Anderson-Lopez and Robert Lopez
Amy & Cody Cowan	The Lucille Lortel Foundation
Roni Cowan	Daryl Roth Productions
Friends of Joan Vail Thorne	Jenna Segal
Greenberg Traurig, P.A.	The Muriel F. Siebert Foundation
Hyde and Watson Foundation	Joan Vail Thorne
Serra Eken	

WP Theater Gratefully Thanks Our Supporters

PIONEER

(Contributions of \$2,500 and above)

Anonymous	Jessica Jenen & Mark Shapiro
Chad Beguelin	Mary & Casey Kemper
Bregal Investments/COFRA	Samantha Sullivan Kindler & Mark Villanueva
Michael Cassel Group	Janis & Alan Menken
CBIZ Marks Paneth	Dara & Robin Miles
Brandilyn Dumas	Carin & Chris Moeder
Laura Eason & Erik Lochtefeld	Niclas Nagler & Alberto Alvarez
Flagstar Bank/Stephanie Dalton and	James L. Nederlander and Nick Scandalios
Margaret Monigan	Judy & Robert Rubin
The John Golden Fund, Inc.	Ann & Richard Sarnoff
Donnetta Lavinia Grays	Sarah Treem
Hudson Scenic Studios	

ACTIVIST

(Contributions of \$1,500 and above)

Gayle Marie Austin	Casey Nicholaw
Vicki Abrams	Adrian Parris
Tanya Barfield	Situation
Rachel Chavkin	Stephen Rosenberg/Inez Benjamin Foundation
Judy & Neil Cohen	Rachel Sussman
Jill Dolan & Stacy Wolf	Ticketmaster
Julie Leff	

CHANGE MAKER

(Contributions of \$1,000 and above)

Sallie Bingham	Christine Oxland
Kenneth Brickman and Michael Pizzi	Lauren Reid
Dr. Shari Brink	Jana Shea
Kathleen Chalfant	Barbara Stern
Jane Ann Crum	Julie Taymor
Ivan Oransky and Cate Vodjik	Barbara Whitman

WP Theater Gratefully Thanks Our Supporters

TREND SETTER

(Contributions of \$500 and above)

Actors' Equity Foundation

Julia Challinor

Peter Corvin-Brittin

Susan Engel/American Gift Fund

Robyn Goodman

Infinity Theatre Company

Rachel Karpf

Emily Mann

Maria Moxon

Anna Ostroff

Leslie Papa

Paramount

Gayle Robinson

Jerome Sag

Marna Sag

Karen Sonet-Rosenthal & Richard Rosenthal

Joan Weingarten and Bob Donnalley Gift
Fund

David Zinn

There is not enough room to list all our generous donations, but we are so grateful for all donors of any amount. Every donation is so important and helps us continue to put Women+ voices center stage! Donations are up to date through September 11, 2024. We apologize for any inaccuracies. Please contact Ria Binaoro at ria@wptheater.org with questions. Thank you!

SUPPORT WP THEATER

For nearly 50 years, WP Theater has remained focused on putting Women+ artists center stage, and that mission has never been more important. Our #WPCommunity includes all of us: artists, donors, staff, audiences, local businesses, and YOU! Your support helps us continue the vital, resilient, and necessary work of Women+ artists—we are so grateful to you for your support

There are various Benefits of Giving available at each contribution level. **[Learn more about those benefits here.](#)**

If you enjoyed the show and want to support WP's mission, please consider **[donating here.](#)**

ABOUT THIS THEATER

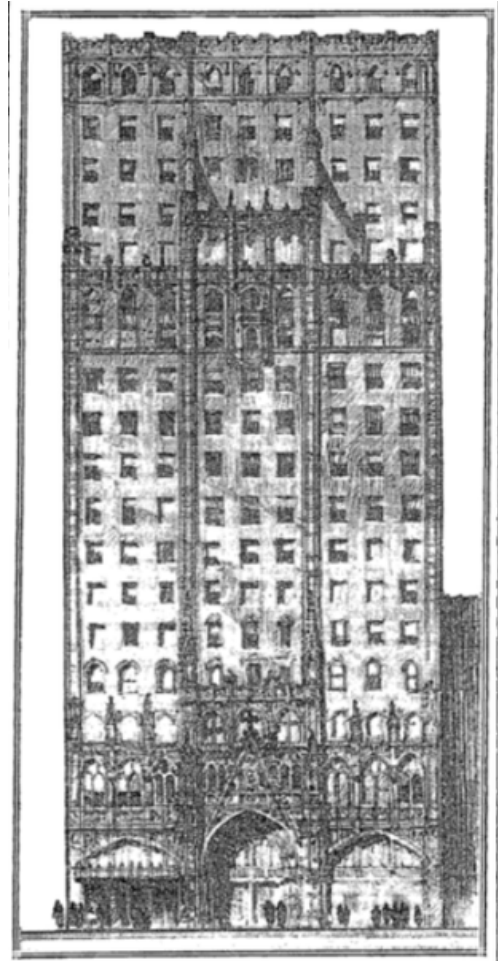
WP Theater stands on Lenape Land. Before this building came into existence, this was wooded land filled with villages of families active with trading and gathering spaces. While descendants of those first families live in this area today, many Indigenous People were forcibly removed with the arrival of European settler colonists. It was on an empty corner lot of this land that a small church was built, then taken apart and rebuilt into this building.

The “skyscraper church” that holds this theater, **once the Manhattan Congregational Church**, has housed many businesses and residents since its construction in 1930, including 200 WAVES during World War II. In 1969, the first-floor auditorium of the church was transformed into the Promenade Theatre, named after its inaugural production: the María Irene Fornés musical, **Promenade, a show recently revived at Encores! Off-Center**.

Though WP’s theater sits on the third floor, we are delighted to produce work in a building with a theatrical history forged by Fornés, **a woman whose leadership of the off-off-Broadway movement and longtime collaboration with WP helped secure the legacy of this institution and paved the way for future female theatremakers**.

In 1979, Carole Rothman and Robyn Goodman co-founded Second Stage Theatre and made this their permanent venue in 1984, dubbing the theater McGinn/Cazale after the late actors Walter McGinn and John Cazale. McGinn’s widow Robyn Goodman and Cazale’s fiancée Meryl Streep wanted to honor the actors’ passion for their craft and commitment to the New York theater community in the dedication of this theater and Second Stage’s first ever production. WP made the McGinn/Cazale our home, in partnership with Second Stage in 2015, as WP Theater had not had a permanent home since the closing of the Julia Miles Theater, named after our founder, in 2011. As of 2022, the theater is now wholly run, year round, by WP Theater.

To encourage this growth, Jann Leeming, Board Chair Emerita, and Executive Director and Senior Trustee of the Royal Little Family Foundation, generously gifted WP a founding grant to support our first three years’ residence in this building. **WP Theater now celebrates nearly 50 years of challenging preconceptions about the kinds of stories Women+ tell and working towards gender parity in theater. Since WP Theater mounted its inaugural production in this venue, the New York premiere of Dear Elizabeth by Sarah Ruhl, we have been honored to make this storied theater a home for Women+ to reach their full potential.**



WP THEATER SEASON 2024 - 2025

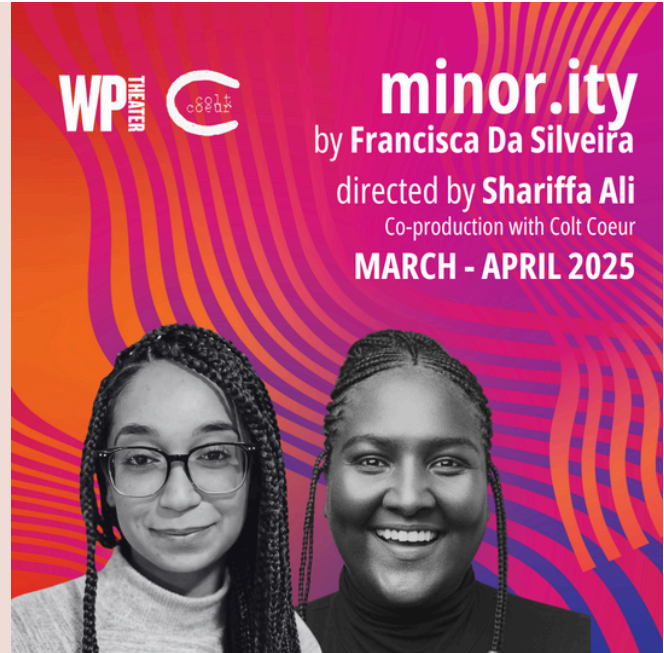
Sept. 21 - Oct. 20

dirty laundry

by **MATHILDE DRATWA**
directed by **REBECCA MARTÍNEZ**



WP
THEATER



WP
THEATER

minor.ity
by **Francisca Da Silveira**
directed by **Shariffa Ali**
Co-production with **Colt Coeur**
MARCH - APRIL 2025

Learn more at WPTheater.org

OUR COMMUNITY PARTNERS



**BALLANTINE
BOOKS**



GRAND BAZAAR NYC
Artisans, Antiques & Edibles.

Goddard Riverside

INVESTING IN PEOPLE, STRENGTHENING COMMUNITY